

A man and a woman are standing in a room with white walls and furniture. The walls are decorated with vertical red paint drips. The woman is wearing a white quilted jacket and holding a fan of color swatches. The man is wearing a plaid shirt over a white t-shirt and holding a white cup and a paint roller. The background includes white hexagonal shelves and a white table with decorative items.

VIVID WHITE

BY EDDIE PERFECT

MTC MELBOURNE
THEATRE
COMPANY

Welcome



Vivid White is a production that brings with it palpable excitement. For us at MTC, it's a work that pushes us creatively and technically, and for audiences it promises an experience unlike anything you've seen on our stages this year.

In 2013 we presented Eddie Perfect's first play, *The Beast*, which blew Melbourne away with its bold comedy and on-the-pulse commentary of middle class aspirations. This new MTC commission, supported by the Clemenger Trust and directed by our Associate Director Dean Bryant, pushes conventions a little further with the welcome addition of satirical songs and an entirely unique take on the real estate market in Australia.

The chorus you'll see throughout the show is comprised of second year Music Theatre students from the Victorian College of the Arts, who join the production thanks to a new partnership established especially for this show. We're passionate about supporting students in their pursuit of careers in creative industries and are delighted to be providing them with this opportunity. Not only do the students gain experience in a professional setting but, better still, their involvement is part of their coursework and end-of-year assessment.

This show is full to the brim with Eddie's signature comedy and graced with a cast and creative team so talented they're in a league of their own. I can't think of a better way to see out Season 2017.

Thank you for joining us for another wonderful year at MTC and tirelessly supporting our work and our artists. It's always a pleasure to have your company on our theatrical adventures and we can't wait to do it all again in 2018.

See you on the other side.

A handwritten signature in black ink that reads "Brett".

Brett Sheehy AO
Artistic Director

Melbourne Theatre Company acknowledges the Yalukit Willam Peoples of the Boon Wurrung, the Traditional Owners of the land on which Southbank Theatre and MTC HQ stand, and we pay our respects to Melbourne's First Peoples, to their ancestors past and present, and to our shared future.

MTC is a department of the University of Melbourne.



MTC is assisted by the Commonwealth Government through the Australia Council, its arts funding and advisory body, and by the State Government of Victoria through Creative Victoria.



MTC is a member of Live Performance Australia and the Australian Major Performing Arts Group.



MELBOURNE THEATRE COMPANY PRESENTS

VIVID WHITE

BY EDDIE PERFECT

18 NOVEMBER – 23 DECEMBER 2017

Southbank Theatre, The Sumner

— Cast —

Holly/Consultant/Rachel Gillian Cosgriff
Güüs/Brenda Virginia Gay
Ben Brent Hill
Liz Verity Hunt-Ballard
Martin/Harvey Keegan Joyce
Evan Ben Mingay
Cynthia Christina O'Neill

— Ensemble —

Sian Crowe, Manali Datar, Majella Davis, Jake Gardner,
Lauren Goetz, Juan Gomez, Chloe Honig, Hamish
Johnston, Sarah Krndija, Ayesha Madon, James
Majoos, Nicholas Mayer, Jessica Monk, Olivia Morison,
Callum O'Malley, Tomas Parrish, Matthew Prime,
Joseph Spanti and Lisa Thomas.

The Ensemble has been made possible with support
from VCA Music Theatre at the University
of Melbourne and the Media, Entertainment
& Arts Alliance.

— Creative Team —

Director Dean Bryant
Set Designer Owen Phillips
Costume Designer Tim Chappel
Lighting Designer Ross Graham
Sound Designer Russell Goldsmith
Musical Director/Orchestrator James Simpson
Assistant Director Sarah Kriegler
Choreographer Andrew Hallsworth
Associate Choreographer Natalie Gilhorne
Movement Director Lyndall Grant
Associate Movement Director Kyle Davey
Creature Designer A Blanck Canvas
Vocal Consultant Debbie Phyland
Stage Manager Whitney McNamara
Deputy Stage Manager Julia Smith
Assistant Stage Manager Jess Maguire
VCA Stage Management Secondment Julia Orlando
VCA Design Secondment Nathan Burmeister
Sound Design Attachment Kellie-Anne Kimber
VCA Sound Secondment Caiden de Win
Rehearsal Photographer Deryk McAlpin
Production Photographer Jeff Busby

— About the play —

Liz and Ben have been mates with Cynthia and Evan for years, and would never let anything get in the way of their friendship. Except, when both couples set their sights on buying the same house – that's different. Forget friendship, forget respect, forget human decency: this is the Australian property market. Not even the imminent collapse of civilisation itself could stop the zombie-like single-mindedness of buying the perfect house.

For information regarding running time please see a member of the Front of House team.

Commissioned with the support of the Joan & Peter Clemenger Trust

Production Partner

Media Partners

LITTLE
GROUP

MELBOURNE
AIRPORT

TimeOut

Cover photo: Justin Ridler

Walking the line

Eddie Perfect on the challenges of writing and performing satirical comedy.



Satire is best served without a wink or a nudge. To let an audience in on the joke is unforgivable; to give an audience an 'out', cowardly. The only crime worse than making safe

is the act of an author laboriously penning an explanation of his or her intentions. I will endeavour to avoid making that mistake here by instead touching on some of my experiences working within the form of satirical comedy.

You may regard these words as a kind of whinge, or needy balm to soothe the accumulated cuts and bruises of failure. I can't really apologise for that, for while I'm grateful to have had the rare privilege of being able to sustain a living through my art, it is dishonest to discuss satirical form without discussing failure. For what is satire but the art of making the middle class (of which I am a card-carrying member) feel bad about themselves in a manner entertaining enough to avoid being lynched when the curtain comes down? What is satire but the promise of a better way to exist? A more compassionate way to act? Satire is a form of exposure therapy; it confronts us with the worst of ourselves in order to inspire change. But can satire change us? If we are unable or unwilling to change, has satire *failed*? Since the world we inhabit is objectively uninged, can

we expect satire to really work anymore? Did it *ever*? Boy, I bet this is filling you with confidence.

In 2004 I walked into Max Gillies' dressing room at the Brisbane Powerhouse and found his table covered with hand-written letters [from the audience]. We'd just started a run of *The Big Con*, a night of Max's satirical characters set in a right-wing think tank. I wrote and performed satirical songs and acted as an MC, covering Max's complicated costume, wig and make-up changes. Temptation got the better of me and I read some of the letters. Each of them (in one way or another) pined for Max to return to previous form – that *this* show had crossed that invisible line from 'clever and incisive' to 'offensive and lewd'. This was my first show performing to a broader, more theatrically literate audience than the ones who filled the comedy, cabaret and fringe venues I was used to. I was dejected.

Max let me in on a secret; people *always* preferred the previous show. Satire, he told me, is an art form that becomes safer, more palatable, with the benefit of time. Time had a way of sand-papering off sharp edges and editing out discomfort. According to Max, every new show was met with correspondence that praised shows previous, penned by an audience reeling from the discomfort of seeing the worst of themselves and their public figures amplified to a ridiculous (and malicious) comic extreme. ►



Verity Hunt-Ballard and Brent Hill



Keegan Joyce and Virginia Gay



Christina O'Neill and Joseph Spanti



Ben Mingay



Keegan Joyce, Gillian Cosgriff, Christina O'Neill, Ayesha Madon and Chloe Honig



At the time I found it reassuring; *maybe we're getting it right?* Fifteen years later, I still don't know what 'right' is.

Since my apprenticeship with Max Gillies, the bulk of my career has involved writing, performing, discussing and defending satire in one form or another. From first-hand experience I can tell you I find it to be an art form that is certifiably masochistic in both its creation and consumption. I've been heckled offstage at trade union rallies, sacked mid-song at a fundraiser for Ronald McDonald House, experienced walk-outs and protests, received death threats, and paid more money than I care to admit for advice from defamation lawyers. It should be said I've also had a great deal of fun.

Writing and performing satire is unpredictable, uncomfortable and often confusing. Is the audience laughing? Stop pulling your punches. Stop *preaching* to the choir. Is the audience booing? Walking out? You've missed the mark. You're merely aiming to shock. You're *no good anyway*. Satire often feels like it's either a cosy blanket for warmly affirming the

ideologically aligned, or a kind of theatrical kryptonite to be reviled at best and at worst, ignored. Where's the line? And how do you walk it?

Here's something to cut through the cynicism like the sorbet course of a pricey degustation; at the heart of satire is a pure, pathetic, embarrassing and delusional truth. It's a truth we teach our kids and forget about in adulthood. The belief that we can change the world, even just a bit. I'm an optimist. I don't think I'd bother with satire otherwise.

Unlike any other theatrical form, audiences are left at the conclusion of a satirical work thinking 'Yes, but what is it all *for*? How are we supposed to *live*?' That's a terrific question. When you find the answer, be a dear and let the rest of us know, will you? ■



Hear more from playwright Eddie Perfect in our MTC Talks podcast series. mtc.com.au/MTCTalks

Brent Hill and Ben Mingay



Gillian Cosgriff



Sarah Kriegler and Keegan Joyce



Brent Hill and Verity Hunt-Ballard

Soothing balms and Molotov cocktails

Comedy writer Michelle Law reflects on Australia's tradition of tackling complex issues through satire.



Brent Hill, Christina O'Neill, Keegan Joyce and Virginia Gay



It's a form of comedy that's entertained and energised audiences for millennia. Aristophanes skewered Socrates in his play *The Clouds*, by making Socrates a caricature of himself.

In Commedia dell'arte, stock characters like Pantalone and Il Dottore embody the stinginess and folly of the upper class. On *Saturday Night Live*, Amy Poehler and Tina Fey helped affect the outcome of a US presidential election through their depictions of Hillary Clinton and Sarah Palin. Satire employs exaggeration, irony and mockery (among other things) to expose the injustices and failings of people, collectives and power systems. It's arguably the cleverest form of comedy because it comes with a political punch so deftly delivered that you're knocked out before you even know that you're fighting.

Growing up, I knew that walking outside at night was dangerous, so I'd stay indoors and watch re-runs of *The Simpsons* where Lisa challenged sexism with passion and intellect. I knew that there was no way to reason with racists who screamed 'rice' at my family, or our neighbours who eyed us with contempt as they staked One Nation placards on their lawn, so my siblings and I played the Pauline Pantsdown single *I Don't Like It* on our CD player until the disc wore out. Satire was my soothing balm and my Molotov cocktail.

As a child, I had a deep fear of vampires/time travel/tidal waves/the film *The Truman Show*/the film *Beetlejuice*/alien abduction/gremlins ... how much time do I have? To manage my anxiety, my psychologist suggested I try laughing at my fears in order to rob them of their power. (Maybe the vampire never got to suck my blood



because, maybe, it tripped on some cloves of garlic and broke its leg en route to my house.) Satire can strip away pain, fear and power; it shows us that narratives can be rewritten if we are willing to do the work.

Australia has a long and loved tradition of satire. *Frontline* satirised the trashy journalism undertaken by current affairs programs. Russell Coight's *All Aussie Adventures* poked fun at an overconfident and mansplaining outback expert. *Kath & Kim* gifted us with absurd portraits of suburban life and the new middle class, and *Clarke and Dawe* was beloved for its biting takedown of Australian politics. As a nation we relish any opportunity to take the piss out of ourselves through these portrayals, and the powerless among us hunger for these portrayals because we recognise their potential to change the fabric of our society.

Comedy in contemporary Australia is morphing with our level of social consciousness. The black face on *Hey Hey It's Saturday* and more recently *Jonah from Tonga* no longer flies; we'd much rather watch shows like *Black Comedy*, which stars actual black people telling their stories. We call out material that tears down LGBTQIA+ persons and fill theatres with audiences for Hannah Gadsby's *Nanette*. We're exhausted by misogynistic gags and choose to tune in to *Get Krack!n* instead. These are changing times; young audiences are angry and woke, and comedy in Australia will continue to reflect that. We love Australia because it's home, but there are things about 'home' – unresolved fights, dark and unacknowledged histories – that make you want to cringe, scream, and wish to God that things were different. That things were better. It's laughter that's going to get us there. ■



Jake Gardner, Jessie Monk, Callum O'Malley, Christina O'Neill, Verity Hunt-Ballard, Brent Hill, Virginia Gay, Manali Datar, Sian Crowe and Hamish Johnston

Cast & Creative Team



GILLIAN COSGRIFF

Holly/Consultant/Rachel

Gillian Cosgriff graduated from the Western Australian Academy of Performing Arts in 2010 with a Bachelor of Music Theatre. Theatre credits include: *Company* (Watch This); *Loving Repeating* (Vic Theatre Company); *Soi Cowboy* (Brisbane Powerhouse); and *The Pirates Of Penzance* (The Production Company). Television credits include *Offspring*, *House Husbands*, *Fat Tony & Co.* and *Ricketts Lane*. She was a backing vocalist for Kate Miller-Heidke's 2012 album *Nightflight* and is currently writing a new work for the Victorian Opera with Casey Bennetto (*Keating! The Musical*) and composer Julian Langdon. She has toured extensively with her solo shows as a comedian and cabaret performer, most notably at the Adelaide Cabaret Festival, Melbourne International Comedy Festival, Edinburgh Fringe Festival and Leicester Square Theatre in London. Gillian has released three CDs of original songs from her cabaret shows *Waitressing...and Other Things I Do Well*; *This Is Why We Can't Have Nice Things* and *Whelmed*. Her work has received awards including Best Cabaret (Melbourne Fringe), The West Australian Arts Editor Award (Fringeworld Perth), and a Green Room Award for Original Songs.



VIRGINIA GAY

Güüs/Brenda

Virginia Gay graduated from WAAPA in 2005. Her theatre credits include *Calamity Jane* (One Eyed Man Production); *Minnie & Liraz*, *The Beast*, *On The Production Of Monsters* (Melbourne Theatre Company); *Gaybies* (Midsumma Festival); *High Society* (Hayes Theatre Co); *The Producers*, *Jerry's Girls* (The Production Company); *Wonderful Town* (Sydney Philharmonic); and *The Wharf Revue* (Sydney Theatre Company). She is a regular guest on ABC's *The Book Club*, and has toured her solo cabaret shows *Songs to Self Destruct To*, *Cautionary Tales for Children*, and *Dirty Pretty Songs* all over the world, most notably playing the Sydney Opera House, and headlining the Famous Spiegeltent at the Edinburgh Fringe Festival. Her television credits include Channel Seven's *All Saints* and *Winners & Losers*.



BRENT HILL

Ben

Brent Hill previously appeared in *The Speechmaker* for Melbourne Theatre Company. His other theatre credits include *Chimerica* (Sydney Theatre Company); *Mr Burns* (Belvoir); *Twelfth Night* (Bell Shakespeare); *Julius Caesar* (Cry Havoc); *The Distance From Here* (Griffin Theatre); *Little Shop of Horrors* (Luckiest Productions & Tinderbox Productions); *Once Korea* (Once UK); *Once* (GFO Attractions Pty Ltd); *Jerry's Girls*, *Pirates of Penzance*, *The Producers* (The Production Company); *Dreamsong* (Theatreworks); *A Number* (Perth Theatre Company); *A Funny Thing Happened on the Way to the Forum* (Gordon Frost Organisation); *Rock of Ages* (Rock of Ages Australia); *Risky Lunar Love* (504 Productions); *Summerfolk* (Bob Presents). Television credits include *Donnatetelegrams*, *Laid* and *It's a Date* for ABC. Composing credits include *Risky Lunar Love* (504 Productions), and *The Happy Ending*. Brent's awards include the 2016 Sydney Theatre Award, Judith Johnson Award for Best Performance by a Male Actor in a Musical for *Little Shop of Horrors*, 2011 Green Room Award for Male Artist in a Leading Role for *Rock of Ages*, 2009 National Theatresports Champion, 2010 Cranston Cup Theatresports Champion and 2005 Actors Equity Guild Award for Best Newcomer. Brent's training includes Hayman Theatre (Curtin), WAAPA (Acting) and Ecole Philippe Gaulier, Paris.



ARTISTS WHO CREATE THE BIGGER PICTURE

The Melbourne Model is a distinctive curriculum that gives students a wider understanding of the world beyond their degree. With a breadth and depth of knowledge, our talent is prepared for everything your workplace will become.

HIRE TALENT PREPARED
FOR EVERY FUTURE

**UNIMELB.EDU.AU/
MELBOURNETALENT**



Cast & Creative Team



VERITY HUNT-BALLARD

Liz

Verity Hunt-Ballard is one of Australia's most versatile leading ladies. Verity is best known for her award-winning performance as Mary Poppins in Cameron Mackintosh's smash hit musical of the same name for which she received a Helpmann Award and a Green Room Award. In 2014 Verity won her second Helpmann Award for Best Female Actor in a Musical for her standout performance as Charity Hope Valentine in *Sweet Charity* for Luckiest Productions. In 2015 she also won the Sydney Theatre Award and a Green Room Award for her performance. Verity's other stage credits include: *Hello, Dolly!*, *Guys and Dolls* (The Production Company); *The Last Five Years* (Vic Theatre Company); *Shane Warne: The Musical* (GWB Entertainment); *The Rocky Horror Show* (Dainty Co & New Theatricals); *Jersey Boys* (New Theatricals); *Eureka* (Esgee Productions); *Virgins* (Malthouse Theatre); and *Metro Street* (State Theatre Company of SA), winning a Theatre Critics Award for Best Female Performance. Verity is featured on many cast recordings and has appeared in ABC's award-winning television series *The Doctor Blake Mysteries*.



KEEGAN JOYCE

Martin/Harvey

Keegan Joyce's career began at age 12 in the title role of Cameron Mackintosh's Australian tour of *Oliver*. Keegan has since played major roles in stage productions including the role of Andrej in *Once* (Melbourne Theatre Company/Gordon Frost Organisation); the Bellboy in *Titanic: The Musical* (Seabiscuit Productions); and *Edges* (James Anthony Productions). Keegan is best known for the role of Arnold in Josh Thomas' AACTA award winning TV comedy series *Please Like Me* for the ABC and Pivot Network USA; and his break out role of Fuzz in all four seasons of the ABC's hit series *Rake*. Keegan will return in Season 5 of *Rake* this year. Keegan also appeared in the US feature film *Superman Returns* directed by Bryan Singer. Keegan completed his degree in Musicology at the Sydney Conservatorium of Music in 2004, and in 2016 recorded his debut album *Snow on Higher Ground* released on major digital platforms and vinyl.



BEN MINGAY

Evan

Vivid White marks Ben Mingay's Melbourne Theatre Company debut. Previous stage credits include Thomas in *Rolling Thunder Vietnam*; The Phantom in *The Phantom of the Opera*; Zack Mayo in *An Officer and a Gentleman*; Tommy De Vito in *Jersey Boys*; Billy Kostecki in *Dirty Dancing*; Stewpot in *South Pacific*; Billy in *Sideshow Alley* and Berger in *Hair*. Screen credits include Alan Bond in *House of Bond*; Grease Nolan in Mel Gibson's *Hacksaw Ridge*; Trystan Powell in *Home and Away*; Rob Duffy in *Wonderland*; Buzz Graham in *Packed to the Rafters*; Troy Baxter in *Blue Heelers* and Jim Beatson in *All Saints*. Ben is also a member of the hit singing group *Swing On This*.

ANDREW KAY IN ASSOCIATION WITH THE KINGS HEAD THEATRE PRESENTS

AMANDA MUGGLETON as



MARIA CALLAS

IN A BRAND NEW PRODUCTION OF

TERRENCE McNALLY'S

MASTERCLASS

DIRECTED BY ADAM SPREADBURY-MAHER

WITH

WILL CONYERS • JESSICA BOYD
KALA GARE • ROCCO SPERANZA

SOUTHBANK THEATRE, THE LAWLER FROM 5 JANUARY

SOUTHBANKTHEATRE.COM.AU PH: 8688 0800

Cast & Creative Team



CHRISTINA O'NEILL

Cynthia

Christina O'Neill is delighted to be making her Melbourne Theatre Company debut in *Vivid White*. Her theatre credits include *The River*, *Middletown*, *Belleville*, *Straight* and *The Motherf*cker with the Hat* (Red Stitch Actors' Theatre); *Into the Woods*, *Sunday in the Park with George* (Victorian State Opera); *Show Boat* (The Production Company); *Gaybies* (Midsumma Festival); *Savage in Limbo* (Workhorse Theatre Company); *Prodigal* (fortyfivedownstairs); *Avenue Q* (Arts Asia Pacific/Power Arts); *Monty Python's Spamalot* (Louise Withers & Associates); *Tell Me on a Sunday* (Kookaburra); *Priscilla*, *Queen of the Desert – The Musical* (Back Row Productions/Chugg Entertainment). Christina's TV credits include *Winners and Losers* (Channel 7); *The Divorce* (ABC); *City Homicide* (Channel 7); *Best of British Comedy* (Comedy Channel); *Jeopardy* (BBC). Christina won the 2010 Helpmann Award for Best Supporting Actress (*Avenue Q*). Christina graduated from WAAPA in 2005.



EDDIE PERFECT

Playwright

Eddie Perfect is one of Australia's most diverse, respected and prolific writer/composer/performers, having made his mark in comedy, music theatre composition, playwriting, screenwriting, classical music, jazz and acting for stage and screen. His stage credits include Baz Lurhmann and Global Creatures' *Strictly Ballroom*, Malthouse Theatre's *Babes In The Wood*; *Drink Pepsi, Bitch*; *The Big Con*, *Shane Warne: The Musical*; *Keating! The Musical*; *Songs From The Middle* collaborating with ANAM, Iain Grandage and the UK's Brodsky Quartet; Opera Victoria's *The Threepenny Opera* and Opera Australia's *South Pacific*. His solo music comedy shows (*Angry Eddie*; *Drink Pepsi, Bitch*; *Misanthropology*) have received Helpmann and Green Room Awards, and toured Australia, New Zealand, Edinburgh and London. His first play *The Beast* for Melbourne Theatre Company was a commercial and critical hit, before touring Australia with Ambassador Theatre Group in 2016. Eddie is currently writing a musical adaptation of *Beetlejuice* for Warner Bros. Theatrical Enterprises in New York; and is writing the score for *King Kong* on Broadway alongside Marius De Vries (Global Creatures), opening at the end of 2018 at the Broadway Theatre. Eddie was co-Artistic Director of Adelaide Cabaret Festival in 2016 and 2017.



DEAN BRYANT

Director

MTC Associate Director Dean Bryant has previously directed *Born Yesterday*, *Skylight*, *I'll Eat You Last* and *Next to Normal* for the Company. He also worked on *Macbeth*, *The Drowsy Chaperone*, *The 25th Annual Putnam County Spelling Bee* (and STC season), *Hitchcock Blonde* and *Urinetown* (and STC season). For Hayes Theatre he directed *Sweet Charity* (Helpmann Award), *Little Shop of Horrors* and *Assassians*; for Opera Australia *Two Weddings*, *One Bride* and *Anything Goes* (and GFO). Other credits include *Once We Lived Here* (London season), *DreamSong* (TheatreWorks), *Straight* (Red Stitch), *The Last Five Years* and five musicals for The Production Company. With composer Mathew Frank, he wrote Green Room award-winning musicals *Prodigal* and *Once We Lived Here*, as well as *Virgins: A Musical Threesome*, *The Silver Donkey* and an Amy Winehouse musical for Channel 10's *Mr & Mrs Murder*. Dean created verbatim piece *Gaybies* (Midsumma Festival). Dean is Worldwide Associate Director of *Priscilla*, *Queen of the Desert – The Musical* and is a graduate of WAAPA.

Cast & Creative Team



OWEN PHILLIPS

Set Designer

For Melbourne Theatre Company, Owen Phillips has previously designed set and costumes for *Egg* and *I'll Eat You Last*. As part of MTC's NEON Festival, Owen designed costumes for Arthur's *The Myth Project: Twin* and Sisters Grimm's *The Sovereign Wife*. Other design credits include set and/or costume for *Two Weddings*, *One Bride* (Opera Australia); *Little Shop of Horrors* (Tinderbox Productions/Luckiest Productions); *Sweet Charity* (Luckiest Productions/Neil Gooding Productions); *Niche* (Elbow Room); *Funny Girl*, *Jerry's Girls* and *La Cage Aux Folles* (The Production Company); *Gaybies* (Midsumma Festival); *Master Class* (Left Bauer Productions); *Fallen* (Sport for Jove/She Said) and *The Dust and Us* (Human Animal Exchange). Owen's designs have been nominated for a total of four Green Room Awards, two Australian Production Design Guild Awards, and two Sydney Theatre Awards, winning in 2017 for *Little Shop of Horrors*. Owen was also a recipient of the Australian Council's ArtStart grant in 2015. Owen is a graduate of NIDA.



TIM CHAPPEL

Costume Designer

Tim Chappel's work on *The Adventures of Priscilla, Queen of the Desert – The Musical* earned him a Tony, a NYC Drama Desk Award, an Olivier Award, a Helpmann Award, and a Green Room Award along with Spain's Premios Teatro Award and Canada's Dora Award. The show continues to tour both nationally and internationally. Tim has also worked on stage productions *Sweet Charity* and *Little Shop of Horrors* (Hayes Theatre Co) for which he was awarded Best Costume Design at the Sydney Theatre Awards; *Gypsy*, *Pirates of Penzance*, *Guys and Dolls*, *West Side Story*, *Funny Girl* (The Production Company); *Dream Lover* (Gordon Frost); and *Two Weddings One Bride* (Opera Australia). Tim's television work includes costumes for *Dancing with the Stars* and *Australia's Got Talent*, television series *VIP* starring Pamela Anderson, music videos for Cher and Missy Elliott, and feature films including *Miss Congeniality* and *Mental*. Tim's costume design for feature film *The Adventures of Priscilla, Queen of the Desert* received an Oscar, a BAFTA and an AFI award.



ROSS GRAHAM

Lighting Designer

Ross Graham's lighting design credits include for Off-Broadway: *Come Light My Cigarette* (St Clements); *Beirut* and *True West* (Athena Theatre Company) and *Romeo and Juliet* (Lincoln Centre Education). His Australian Credits include *I'll Eat You Last* (Melbourne Theatre Company); *Boys Will Be Boys* and *Power Plays* (Sydney Theatre Company); *Title and Deed* and *Woyzeck* (Belvoir); *Assassians*, *Little Shop of Horrors*, *Sweet Charity*, *Rent*, *Dog Fight*, *Love Bites* and *Violet* (Hayes Theatre Co); *An Index of Metals*, *Owen Wingrave* and *Climbing Towards Midnight* (Sydney Chamber Opera); *L'amant Jaloux* (Pinchgut Opera); *Edward II* (Sport For Jove); *Nothing Has Changed* (Sydney Symphony Orchestra); *Creature* (Stalker Theatre); *A Steady Rain* (Old Fitz Theatre); *Gaybies* and *This House Is Mine* (Darlinghurst Theatre Company); *The Mesh* (Red Stitch Actors Theatre); *Good People*, *Cruise Control*, *Seminar*, and *Skylight* (Ensemble Theatre); *Silent Disco*, *The Sea Project* and *Return to Earth* (Griffin Theatre); *Voices Project* (Australian Theatre for Young People); *Fearless* (Milk Crate Theatre); *The Fremantle Candidate* (Deck Chair); *The Underpants* and *The Olympians* (NIDA Guest Artist); *Cut Snake* and *Dirtyland* (Arthur, a Theatre Company); *Bill W and Dr. Bob* (Carriage Works).

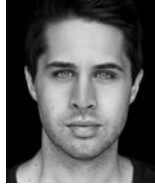
Cast & Creative Team



RUSSELL GOLDSMITH

Sound Designer

Russell Goldsmith is a multiple award-winning Melbourne-based sound designer, composer, producer and audio system designer. He has a diverse body of work in theatre, film, television, commercial and radio production, live music and installation works. He has worked as the Sound Designer and Composer for Melbourne Theatre Company productions of *Noises Off*, *John*, *Disgraced*, *Lungs*, *Endgame*, *What Rhymes with Cars and Girls*, *I'll Eat You Last*, *The Speechmaker*, *Ghosts*, *The Other Place*, *His Girl Friday*, *The Golden Dragon*, *Don Parties On*, *The Swimming Club* and *Ruby Moon* (for MTC Education). He had his Broadway debut in 2009 with the critically acclaimed season of Malthouse Theatre and Belvoir's *Exit The King* at the Ethel Barrymore Theatre, where it played for sixteen weeks. Russell has received multiple Green Room Award nominations, while his sound design for *Exit The King* won the 2007 Sydney Theatre Award, and was nominated for Best Sound Design at both the 2008 Green Room Awards (Melbourne) and the 2009 Tony Awards (New York).



JAMES SIMPSON

Musical Director/Orchestrator

Thrilled to be making his debut with Melbourne Theatre Company, James Simpson is a musical director, arranger, orchestrator and cabaret performer. Recent credits include – as Musical Director/Arranger: *Lucky: Songs By Kylie*, *TWINS*, *Josie In The Bathhouse*, *Experiment* (Adelaide Cabaret Festival); *Thérèse Raquin* (TheatreBench Park Theatre, London); *Star*Struck* (CIDCOM Productions Stadtsaal, Vienna); *Liza on an E* (Speculation Entertainment West End/UK Tour). As orchestrator: *Diamonds Are For Trevor* (TAE/McMahon International – Sydney Opera House, Arts Centre Melbourne, QPAC, Her Majesty's Theatre Adelaide, The Arts Centre Gold Coast); *Liza's Back!...is broken* (Showqueen); *Jerry's Girls* (The Production Company); *Virgins: A Musical Threesome* (Echelon Productions – Malthouse Theatre, New York Musical Theatre Festival, Regional Arts Victoria tour). As Assistant Musical Director: *The Lion King* (Disney Theatrical). Cast Recordings: *Thérèse Raquin*, *Virgins: A Musical Threesome*. James graduated with distinction from the MA Musical Theatre (Musical Directing) course at the Royal Conservatoire of Scotland, and is currently the Assistant Musical Director of the Australian tour of *Aladdin The Musical* (Disney Theatrical).



SARAH KRIEGLER

Assistant Director

Sarah Kriegler is a director, puppeteer, writer, and Co-Artistic Director of Lemony S Puppet Theatre. She is an alumni of Melbourne Theatre Company Women Directors' Program. Most recently, she wrote and directed Lemony S' new work *Picasso and His Dog* which will tour nationally and internationally during 2019 and was dramaturg and puppetry director on The Flying Fruit Fly Circus' *Junk*. She has created works with many other companies including Malthouse Theatre, Chamber Made Opera (CMO), Polyglot Theatre, Terrapin, Aphids, Arena Theatre Company and Theatre Works. She was an Artistic Associate at CMO for 7 years, where she directed *Captives of the City*, commissioned by Arts Centre Melbourne, receiving two Green Room Awards. She is currently co-chair of the Contemporary and Experimental Theatre Green Room Awards Panel and is developing a new work with Alan Brough. Her television and film credits include *Farscape*, *Horace and Tina*, *Downtown*, *Squeak and Boo* and *Where the Wild Things Are*. Sarah's awards include Best Performance for Children (Helpmann), Churchill Fellowship, Best Design/Realisation & Best Puppet Work (Green Room), Best Children's Performance & Gasworks Award (Melbourne Fringe).



Fly to Europe with the World's Best Airline

Enjoy flights from Melbourne to 43 cities across Europe, including our newest destinations Dublin, Nice, Skopje, Prague, and Kyiv. Experience the skies like never before and discover a place where you will always find a breathtaking mix of scenery, culture, and history.

 qatarairways.com/au

 Visit your preferred travel agent



GOING PLACES TOGETHER

Melbourne Theatre Company

BOARD OF MANAGEMENT

Terry Moran AC (Chair)
Tony Burgess
Professor Barry Conyngham AM
Professor Glyn Davis AC
Patricia Faulkner AO
Jonathan Feder
Jane Hansen
Larry Kamener
Janette Kendall
Sharmistha Law
Ian Marshman AM
Martyn Myer AO
Susan Oliver
Brett Sheehy AO
Virginia Lovett

FOUNDATION BOARD

Jane Hansen (Chair)
Terry Bracks AM
Liz Chappell
Fiona Griffiths
Janette Kendall
Jayne Lovelock
Virginia Lovett
Sam Margis
Louise Myer
Leigh O'Neill
Hilary Scott
Richard Tegoni

EXECUTIVE MANAGEMENT

Artistic Director & CEO
Brett Sheehy AO
Executive Director
Virginia Lovett
Executive Assistant to the Artistic Director & CEO
Nick Doherty
Executive Administrator
Annie Bourke

ARTISTIC

Associate Directors
Dean Bryant
Sarah Goodes
Producer
Martina Murray
Literary Director
Chris Mead
Casting Director
Janine Snape
Casting Executive
Matt Bebbington
Company Manager
Stephen Moore
NEXT STAGE Administrator
Sarah Thompson
Literary Associate
Jennifer Medway

CATERING

Catering Manager
Andrea Purvis
Assistant Manager
Anita Lyovic
Café staff
Bev Reinmuth

DEVELOPMENT

Director of Development
Jayne Lovelock
Events Manager
Mandy Jones
Annual Giving Manager
Chris Walters

Philanthropy Coordinator

Sytske Hillenius
Partnerships & Commercial Executive
Matthew Phoenix
Partnerships & Memberships Executive
Syrie Payne
Memberships & Partnerships Assistant
Vivienne Poznanski
Partnerships Assistant
Lachlan Hywood

EDUCATION

Head of Education and Families
Jeremy Rice
Community Outreach Manager
Karin Farrell
Education Coordinator
Nick Tranter

HUMAN RESOURCES

HR Manager
Christelle Harris
HR Administrator
Christine Verginis
EHS Coordinator
Liz Mundell

FINANCE

Finance Director
Liz Chappell
Finance Manager
Ness Harwood
IT and Systems Manager
Michael Schuettke
IT Support Officer
Christopher Rhodes
Finance Officer
Sarah Thompson
Payroll Officer
Julia Godinho
Payments Officer
Lisa Maundrell

MARKETING & COMMUNICATIONS

Marketing and Communications Director
Vanessa Rowsthorn
Marketing Manager
James Wright
Digital Manager
Daniel Coghlan
Marketing Campaign Manager
Ebony Addinsall
Marketing Coordinator
Rebecca Lawrence
Lead Graphic Designer
Emma Wagstaff
Designers
Helena Turinski
Celeste Njoo
PR and Communications Manager
Rosie Shepherdson-Cullen
Publicist
Georgia Fox
Communications Content Producer
Sarah Corridon
PR and Marketing Administration Assistant
Jacqui Bartlett

Receptionist

David Zierk
PRODUCTION & TECHNICAL
Technical & Production Director
Adam J Howe

PRODUCTION

Senior Production Manager
Michele Preshaw
Production Manager (Vivid White)
Josh Noble
Production Coordinator
Marta Losiewicz
Props Buyer/ASM
Swing
Jess Maguire
Production Administrators
Alyson Brown
Isobel Taylor-Rogers

TECHNICAL

Technical Manager
Lighting and Sound
Kerry Saxby
Senior Production Technician
Allan Hiron
Production Technicians
Adam Bowring
Scott McAlister
Technical Manager – Staging
Andrew Bellchambers
Staging Supervisor – HQ
Jamie Cunningham
Production Design Coordinator
Andrew Bailey
CAD Drafting
Jacob Battista

PROPERTIES

Properties Supervisor
Geoff McGregor
Props Maker
Colin Penn

SCENIC ART

Scenic Art Supervisor
Shane Dunn
Scenic Artists
Tansy Elso
Colin Harman

WORKSHOP

Workshop Supervisor
Aldo Amenta
Deputy Workshop Supervisor
Andrew Weavers
Set Makers
Ken Best
Brian Eastale
Nick Gray
Philip de Mulder
Alastair Read
Peter Rosa

WARDROBE

Wardrobe Managers
Judy Bunn
Keryn Ribbands
Wardrobe Staff
John Molloy
Jocelyn Creed
Emily Brewer
Tiffany Abbott
Etai Alves
Mandy Nichols

Lauren Trivett
Lyn Molloy
Jennifer Bismire (Wardrobe Secondment)
Costume Buyer
Sophie Woodward
Costume Hire
Liz Symons
Millinery
Phillip Rhodes
Wigs and Makeup
Jurga Celikiene
Wardrobe
Maintenance
Stella Cadzow
Ulla-Britta Westergren

SOUTHBANK THEATRE

Theatre Operations Director
Mark D Wheeler
Building Services Manager
Adrian Aderhold
House Services Manager
Kam Greville
Production Services Manager
Frank Stoffels
Lawler and Events
Technical Supervisor
Tom Brayshaw
Lighting Supervisor
James Conway
Staging Supervisor
Grant Kennelly
Sound Supervisor
Terry McKibbin
Head Flyman
James Tucker
Stage and Technical Staff
Brendan Albrey
Matthew Arthur
Trent Barclay
Tim Blundell
Michael Burnell
Siobhan Callanan
Stewart Campbell
Misha Doe
Nathan Evers
Eugene Hallen
Adam Hanley
Luke Hawley
Jake Hutchings
David Jenkins
Robert Larsen
David Letch
James Lipari
David Membery
Stephanie Morrell
Josh Noble
Sophie Norfolk
James Paul
Will Patterson
Warwick Sadler
Jonathan Schmolzer
Lara Soulio
Michael Taylor
Michelle Thorne
Alasdair Watson
Joy Weng
Ashlee Wohling
Nick Wollan

HOUSE AND BAR Supervisor
Drew Thomson
Bar Supervisors
Paul Blenheim
Sarah Branton
Tain Stangret
House and Bar Attendants
Will Atkinson
Stephanie Barham
Tanya Batt
Zak Brown
Tom Cushing
Michael Cutrupi
Marisa Cuzzolaro
Leila Gerges
Damien Harrison
Rosie Howell
Leighton Irwin
Kathryn Joy
Shivani Kanodia
Laura Lethlean
Ross Macpherson
Claire Marsh
Faran Martin
Natasha Milton
Yasmin Mole
Daniel Moulds
Ernesto Munoz
Emma Palackick
Faith Peter
Amy Poonian
Clare Reddan
Adam Rogers
Richard Saxby
Myles Tankle
Bella Vadiveloo
Harriet Wallace-Mead
Ali Wheeldon
Rhian Wilson
Jamaica Zuanetti

TICKETING CRM and Ticketing Director
Dale Bradbury
Ticketing Manager
Brenna Sotriropoulos
Ticketing Services Administrator
Lisa Mibus
Subscriptions Supervisor
Jessie Phillips
Database Specialist
Ben Gu
Data Analyst
Megan Thomson
VIP Ticketing Officer
Michael Bingham
Education Ticketing Officer
Mellita Ilich
Box Office Supervisor
Adam Walsh
Box Office Attendants
Brent Davidson
Katie Dircks
Peter Dowd
Fran Hefferman
Jean Lizza
Bridget Mackey
Debra McDougall
Daniel Scaffidi
Tain Stangret
Subscriptions Team Leader
Fran Hefferman
Subscriptions Team
Simon Braxton
Milly Cooper
Patrick Crummy
Alys Daroy
Katie Dircks
Peter Dowd
Chris Elliot

Jess Grimmond
Min Kingham
Matthew Lilley
Ross MacPherson
Faran Martin
Laura McIntosh
Moira Millar
Lucy Payne
Sarah Payne
Jolie Robichaux
Lee Threadgold

COMMISSIONS

The Joan and Peter Clemenger Commissions
Kylie Coolwell
Declan Greene
Judith Lucy
Damien Millar
Ross Mueller
Roslyn Oades
Magda Szubanski
Jean Tong
Other Commissions
Hannie Rayson (with Manhattan Theatre Club)

NEON NEXT

Commissions
Nicola Gunn
NEXT STAGE Residences
Dan Giovanonni
Natesha
Somasundaram
Kylie Trounson
Commissions
Angus Cerini
Patricia Cornelius
Michael Gow
Benjamin Law
Joanna Murray-Smith
Leah Purcell
Ellen van Neerven
Malcolm Robertson Foundation Commissions
Angela Betzien

MTC CONNECT AMBASSADORS

Samah Sabawi
Suhasini Seelini
Shannon Lim
Vidya Rajan
Wahibe Moussa

WOMEN IN

THEATRE

PROGRAM

Gorkem Acaroglu
Mary Rachel Brown
Fiona Bruce
Samantha Butterworth
Tania Canas
Angelica Clunes
Suzanne Cranney
Kellie-Anne Kimber
Clare McKenzie
Diane Marie Sheehan
Erin Taylor
Emily Tomlins
Victoria Woolley

OVERSEAS

REPRESENTATIVES

New York
Stuart Thompson
Productions

MTC Circles of Giving

MTC gratefully acknowledges our visionary donors

MTC LIFETIME PATRONS

Acknowledging a lifetime of extraordinary support for MTC.

Pat Burke
Peter Clemenger AO and
Joan Clemenger AO

Allan Myers AC QC and
Maria Myers AC
The Late Biddy Ponsford

Dr Roger Riordan AM
Caroline Young and
Derek Young AM

ENDOWMENT DONORS

Supporting the long term sustainability and creative future of MTC.

Leading Endowment Donors

\$1,000,000+

Jane Hansen and Paul Little AO

\$20,000+

Tony and Janine Burgess
Geoffrey Cohen Scholarship
Orcadia Foundation
Andrew and Tracey Sisson

\$10,000+

Mim and Michael Bartlett
Carolyn and John Kirby AM
Prof Margaret Gardner AO and
Prof Glyn Davis AC
Anne and Mark Robertson OAM

Recent Endowment Donors

Philip Crutchfield QC and
Amy Crutchfield
Fred and Alex Grimwade
Rosie Harkness
David and Lily Harris
Terry Moran AC
Robert Peck AM and
Yvonne von Hartel AM

Prof David Penington AC and
Dr Sonay Hussein
Emeritus Prof Peter McPhee
Dr Monica Pahuja
Lady Potter AC
Renzella Family
Steven Skala AO and
Lousje Skala
Anonymous

MTC'S PLAYWRIGHTS GIVING CIRCLE

Supporting the Next Stage Writers' Program.

Louise Myer and Martyn Myer AO, Maureen Wheeler AO and Tony Wheeler AO, Christine Brown Bequest
Naomi Milgrom AO, Allan Myers AC QC and Maria Myers AC, Tony Burgess and Janine Burgess
Dr Andrew McAleece and Dr Richard Simmie, Larry Kamener and Petra Kamener



ANNUAL GIVING

Donors whose annual gifts help MTC enrich and transform lives through the finest theatre imaginable.

Benefactors Circle

\$250,000+

Crown Resorts Foundation
Packer Family Foundation

\$50,000+

The Joan and Peter Clemenger
Trust
The Cybec Foundation
Maureen Wheeler AO and
Tony Wheeler AO

\$20,000+

The Late Betty Amsden AO DStJ
Dr Geraldine Lazarus and
Greig Gailey
Hutchinson Builders ●
Louise and Martyn Myer AO
Caroline and Derek Young AM ▲
The Vizard Foundation

\$10,000+

Erica Bagshaw
The Cattermole Family
Christine Gilbertson ◆
Macgeorge Bequest
The late Noel Mason and
Susanna Mason ▲
The Lord Mayor's Charitable
Foundation
Craig Semple ▲
Luisa Valmorbidia ▲

Anonymous (2)

\$5,000+

John and Lorraine Bates
Sandy Bell and Daryl Kendrick
Dr Andrew Buchanan and
Peter Darcy
Ian and Jillian Buchanan
John and Robyn Butselaar
The Janet and Michael Buxton
Foundation
Barry and Joanne Cheetham
Tom and Elana Cordiner ●
The Dowd Foundation
Melody and Jonathan
Feder ■●
Gjergja Family
Robert and Jan Green
David and Lily Harris
Jane Hemstritch
Linda Herd
Dr Caroline Lioh
Anne Le Huray
Marshall Day Acoustics
(Dennis Irving Scholarship)
Ian and Judi Marshman
Ian and Margaret McKellar
George and Rosa Morstyn
Daniel Neal and Peter Chalk
Tom and Ruth O'Dea ■
Leigh O'Neill ◆

Dr Pajouhesh (Smile Solutions)
In loving memory of Richard Park
Prof David Penington AC and
Dr Sonay Hussein
Jeanne Pratt AC
Janet Reid OAM and Allan Reid
Christopher Richardson
The Robert Salzer Foundation ◆
Trawalla Foundation Trust
Anonymous (7)

Advocates Circle

\$2,500-\$4,999

Marc Besen AC and
Eva Besen AO
Jay Bethell and Peter Smart
Grant Fisher and Helen Bird
Bill Bowness AO
Sandra and Bill Burdett AM
Lynne and Rob Burgess
Pat Burke and Jan Nolan
Diana Burleigh
Jenny and Stephen Charles AO
The Cuming Bequest
Debbie Daddon AM
Ann Darby
Dr Anthony Dortimer
and Jillian Dortimer
Dr Helen Ferguson
Rosemary Forbes and
Ian Hocking

Bruce Freeman ■
Heather and
Bob Glindemann OAM
Henry Gold
Leon Goldman
Roger and Jan Goldsmith
Murray Gordon and Lisa Norton
Lesley Griffin
Tony Hillery and Warwick
Eddington
Bruce and Mary Humphries
Peter and Halina Jacobsen
Janette Kendall ◆
Alex and Halina Lewenberg
Virginia Lovett and
Rose Hiscock ●
Carol Mackay and Greg
Branson
Dr Sam and Belinda Margis
and NEST Family Clinics ◆
Dr Sue McNicol QC
Peter and Kim Monk ◆
Sandy and Sandra Murdoch
Jane and Andrew Murray
Dr Paul Nisselle AM and
Sue Nisselle
Tony Osmond and
Fiona Griffiths ◆
Peter Philpott and
Robert Ratcliffe

Anne and Mark
Robertson OAM ♦
Max Schultz
Hilary and Stuart Scott ●
Tim and Lynne Sherwood
Richard and Debra Tregoni ♦ ●
Cheryl and Paul Veith
Ralph Ward-Ambler AM and
Barbara Ward-Ambler
Price and Christine Williams
Margaret and Ray Wilson OAM
Gillian and Tony Wood
Laurel Young-Das and
Heather Finnegan
Anonymous (5)

Loyalty Circle

\$1,000–\$2,499

Dr Katie Allen and Malcolm Allen
Noel and Sylvia Alpines AM
In memory of Nicola Andrews
Valma E. Angliss AM
James and Helen Angus
Kate Aplin
Margaret Astbury
John and Dagnija Balmford
Angelina Beninati
David and Rhonda Black
Steve and Terry Bracks AM
Jenny and Lucinda Brash
Tamara Brezzi ♦
Beth Brown and Tom Bruce AM
Pam Caldwell
Alison and John Cameron
John and Jan Campbell
Jessica Canning
Clare and Richard Carlson
Fiona Caro
Kathleen Cator
Chef's Hat
Chernov Family
Sue Clarke and Lindsay Allen
Assoc Prof Lyn Clearihan and
Dr Anthony Palmer
Dr Robin Collier and Neil Collier
Sandy and Yvonne Constantine

Dr Cyril Curtain
Mark and Jo Davey
Jocelyn Davies
Mark and Amanda Derham
Katharine Derham-Moore
Robert Drake
Bev and Geoff Edwards
George and Eva Ermer
Anne and Graham Evans AO
Marian Evans
Dr Alastair Fearn
Jan and Rob Flew
Heather Forbes ■
Elizabeth Foster
John Fullerton
Kate Galvin ♦
Nigel and Cathy Garrard
Diana and Murray Gerstman
Gill Family Foundation
Brian Goddard
Charles and Cornelia Goode
Foundation ♦
Sarah Graff
Isabella Green OAM and
Richard Green
John and Jo Grigg
Jane Grover ♦
Ian and Wendy Haines
Glen Harrington and
Robyn Eastham
Jane Hodder ♦
Sandi and Gil Hoskins
Emeritus Prof Andrea Hull AO
Ann and Tony Hyams AM
Peter Jaffe
Ed and Margaret Johnson
Prof Shitij Kapur and
Dr Sharmistha Law
Katherine Kavakos ♦
Irene Kearsey and
Michael Ridley
Malcolm Kemp
Liana Kestelman ♦
Fiona Kirwan-Hamilton
and Simon E Marks sc
Doris and Steve Klein

Larry Kornhauser and
Natalya Gill ■
Alan and Wendy Kozica
Ruth and Michael Kurc ■
Elizabeth Laverty
Joan and George Lefroy
Rosemary Leffler
Leg Up Foundation
Alison Leslie
Peter and Judy Loney
Neil and Vida Lowry
Dr Peter and Amanda Lugg
Elizabeth Lyons
Ken and Jan Mackinnon
Alister and Margaret Maitland
Helen Mantzis ♦
Joyce and Bernard Marks
John and Margaret Mason
Garry McLean
Elizabeth McMeekin
Robert and Helena Mestrovic
John G Millard
Ross and Judy Milne-Pott
Ging Muir and
John McCawley ■
Barbara and David Mushin
Nelson Bros Funeral Services
James Ostrobuski
Dr Harry and Rita Perelberg
Dr Annamarie Perlesz
Prof Hannah Piterman ♦
Dug and Lisa Pomeroy
Sally Redlich
Victoria Redwood
Dr S M Richards AM
and M R Richards
Rogers Family ■
Sue Rose
Rae Rothfield
Linda Robinstein
and Paul Slape ●
Patrick Rundle and
Damien Mulvihill ■
Anne and Laurie Ryan
F & J Ryan Foundation
Edwina Sahhar

Margaret Sahhar
Katherine Sampson
and Michael Jaboori
Susan Santoro
Kaylene Savas ♦
Graeme Seabrook
Marshall Segan and
Ylana Perlov
Claire Sheed
Prof Barry Sheehan
and Pamela Waller
Steven Nicholls and
Brett Sheehy AO
Diane Silk
Dr John Sime
Jane Simon and Peter Cox
Reg and Elaine Smith OAM –
Earimil Gardens Charity
Tim and Angela Smith
Annette and
Graham Smorgon ♦
Diana and Brian Snape AM
Geoff and Judy Steinicke
Ricci Swart
Rodney and Aviva Taft
Sylvia Taylor
Suzanne Thompson
Frank Tisher OAM and
Dr Miriam Tisher
Susie Waite ●
Kevin and Elizabeth Walsh ■
Pinky Watson
Marion Webster ♦
Ursula Whiteside
Penelope and Joshua White
Ann and Alan Wilkinson
Jan Williams ■
John and Myriam Wylie
Foundation ♦
Mandy and Edward Yencken
Graeme and Nancy Yeomans
Greg Young
Roz Zalewski and
Jeremy Ruskin
Ange and Pete Zangmeister
Anonymous (26)

LEGACY CIRCLE

Acknowledging supporters who have made the visionary gesture of including a gift to MTC in their will.

Mark and Tamara Boldison
Bernadette Broberg
Adam and Donna Cusack-Muller

Peter and Betty Game
Irene Kearsey
Fiona Griffiths

Max Schultz
Dr Andrew McAlicie and
Dr Richard Simmie

Peter Philpott and
Robert Ratcliffe
Anonymous (5)

LEGACY GIFTS

Remembering and honouring those who have generously supported MTC through a bequest.

The Estate of Leta-Rae Arthy
The Christine Brown Bequest
The Estate of Ron Chapman
The Estate of Gordan J Compton

The Estate of Betty Ilic
The Estate of Bettie Kornhauser
The Kitty and Leslie Sandy
Bequest

The Estate of James Hollis
Minson
The Estate of Prudence
Ann Tutton

The Estate of Freda E White
The Estate of Dorothy Wood

Acknowledging Donors who join together to support innovative and inspiring programs for the benefit of our community.

▲ ARTISTIC DIRECTOR'S CIRCLE

■ YOUTH AMBASSADORS
GIVING CIRCLE

◆ WOMEN IN THEATRE
GIVING CIRCLE

● EDUCATION
GIVING CIRCLE



PACKER FAMILY
FOUNDATION

HANSEN LITTLE
FOUNDATION

THE
Cybec
FOUNDATION



— Thank You —

MTC would like to thank the following organisations for their generous support

Major Partners



Major Media Partners



Production Partners



Premium Season Partners



Season Partners



Marketing Partners



Southbank Theatre Partners



If you would like to join our corporate family or host a private event, please contact partnerships@mtc.com.au

—— What's On ——

The acclaimed **National Theatre** production

THE CURIOUS INCIDENT OF THE DOG IN THE NIGHT-TIME

A NEW PLAY BY
SIMON STEPHENS

BASED ON THE BEST-SELLING NOVEL BY
MARK HADDON

11 JANUARY — 18 FEBRUARY

Direct from the National Theatre is the five-time Tony and seven-time Olivier Award-winning play *The Curious Incident of the Dog in the Night-Time*.

Don't miss out on this international phenomenon presented by MTC and Arts Centre Melbourne. Tickets are now on sale.

mtc.com.au/2018



THE CHILDREN

By Lucy Kirkwood

Three of Australia's favourite leading actors, Pamela Rabe, Sarah Peirse and William Zappa, are at the heart of this marvellous new play from award-winning British playwright Lucy Kirkwood.

3 FEBRUARY – 10 MARCH





GIFT IDEAS


From beautifully designed Gift Vouchers to tickets to a show, treat your friends and loved ones to an unforgettable theatrical experience this festive season.

MTC.COM.AU/GIFTIDEAS

GET SOCIAL WITH MTC

 [MelbourneTheatreCompany](https://www.facebook.com/MelbourneTheatreCompany)

 [melbtheatreco](https://twitter.com/melbtheatreco)

 [melbtheatreco](https://www.instagram.com/melbtheatreco)

MTC.COM.AU



Freedom, reimagined.



The all-new Audi A5 Cabriolet. Openly beautiful.

**Audi Australia is proud to be a Major Partner
of Melbourne Theatre Company.**

Audi Vorsprung durch Technik

Overseas model with optional equipment shown.